

GALYEAN

Livestock Trailer

Henderson, Texas

1-800-230-0924

The Next Generation of Livestock Trailers

Galyean Livestock Trailers - *Galyean is proud to announce our new line of steel gooseneck livestock trailers.*



IF YOU DON'T READ ANYTHING ELSE, READ THIS:

For the last few years, you have asked for it and Galyean has listened. Galyean is proud to announce our new line of steel gooseneck livestock trailers – Galyean Stock Trailers!

Galyean utilizes the same high tensile plate steel that is used in the manufacture of its severe service off road tanker trailers to produce a stronger frame that is the backbone of the livestock trailer. This CNC formed “Z” pan has a higher vertical web for additional strength unlike any other trailer on the market. The unique “tee post” tubing design at rear of the trailer along with the wrapped tubing bumper adds more structural strength to the rear of the trailer. Welds are produced with a higher end quality gas and wire that is specifically found in certified vessel shops, applied by experienced certified welders.

Galyean not only goes the extra mile to fabricate a stronger livestock trailer, Galyean believes that our paint coating system sets us apart from other manufacturers. Galyean uses the same paint process on its livestock trailers as we do on our DOT tanker trailers. Beginning with steel grit blast to a near white profile then applying high solids flex base color coat followed by a corrosion inhibiting clear coat. The clear coat provides exceptional gloss, color retention, and is much more resistant to rock chips and scratches compared to the standard non-clear coated systems. All of these processes add up to long term durability, corrosion resistance and an extended life expectancy of the trailer.

Galyean has thought of everything. The attention to detail is extraordinary, right down to the grease zerks on the latch receiver. There are many details that are standard for the Galyean Stock Trailer which other manufacturers consider to be options or upgrades.



JUST TWO THINGS - The attention to detail is remarkable, right down to the grease zerks on the latch receiver. But the two most important features of our trailers are the Uni-Body FRAME and the FINISH.



Uni-Body Frame

The obvious difference is the construction of the trailer itself. The stock trailers have a Uni-Body construction. That means the body is the frame. Therefore, the durability of the frame dictates the lifespan of the trailer. Galyean's will outlast the rest!

Standard stock trailers use fenders and body pans made out of 12-gauge sheet metal. Now the specification on 12-gauge sheet metal is a thickness of .1046 of an inch, or about a 7/64th of an inch.

The Galyean trailer has fenders and body pans made of 3/16th plate (.1793)!

The Galyean trailers use 2" x 2" angle but the placement is the key to their strength. They are placed longitudinally, the length of the trailer, on 12" centers, further supported by perpendicular 5" channel every 4 ft. PLUS an 8" channel that runs across the back of the trailer!

Galyean utilizes the same high tensile plate steel that is used in the manufacturing of their severe service off road tanker trailers to produce a stronger frame that is the backbone of the livestock trailer. Their CNC formed "Z" pan has a higher vertical web for added strength unlike any other trailer on the market. The unique "tee post" tubing design at the rear of the trailer, along with the wrapped tubing bumper adds more structural strength to the rear of the trailer. Welds are produced with a higher end quality gas and wire that is specifically found in certified vessel shop, applied by experienced certified welders to create a superior stock trailer.

JUST TWO THINGS - The attention to detail is remarkable, right down to the grease zerks on the latch receiver. But the two most important features of our trailers are the Uni-Body FRAME and the FINISH.



This stock trailer has not weathered well.



*You want something that will hold its value,
Well you've found it!*

Finish

A stock trailer is the only trailer used in cattle production where corrosion from animal waste is a concern, it is a HUGE problem. Livestock waste is corrosive to steel and will make a stock trailer rust out faster than anything.

Therefore, the finish on a stock trailer is CRITICAL and Galyean utilizes a finish that quite frankly, no one else is even capable of producing.

Galyean has been building acid, chemical and fertilizer trailers for over 30 years. Can you imagine the protection that has to be put on those trailers? Well, they put the same finish on these stock trailers.

The first step of the paint preparation process includes blasting the surface of the steel down to a near white finish with a STEEL grit blast process. This cleans and etches the steel to allow the paint to bond to the trailer better, creating a perfect seal. Then, they apply 4-6mm of high solids Epoxy paint followed by a superior form color base acrylic clear coat finish with added corrosion inhibitors to fight rust. The clear-coat provides excellent gloss and color retention and is much more resistant to rock chips and scratches than the standard non clear coated systems.

In summary, just those two factors, the construction and finish mean your trailer will still be operating long after your neighbor's trailer has gone to the scrapyard!



More on Galyean

Galyean Equipment has been manufacturing heavy haul agricultural and oilfield products since 1981. They apply their engineering and modern manufacturing practices in a state-of-the-art facility to develop this new line of steel gooseneck livestock trailers.

Galyean not only goes the extra mile to fabricate a stronger livestock trailer, Galyean believes that their paint coating system sets them apart from other manufacturers of stock trailers. All of these processes add up to long term durability, corrosion resistance and extended life expectancy of the trailer.

Galyean's stock trailer comes standard with heavy duty butterfly gates on the rear framed with 2x4 tubing uprights and a pipe latch. We offer other types of rear gates, such as a sliding gate to suit your specific needs which are optional.

The Galyean stock trailer comes standard with the X-lug cleated rubber flooring that comes with a 20 year no rot warranty. This rubber, cleated flooring will outlast the rest!



Available Equipment & Stock Trailer Options

G.A.W.R	Combined 14,000 # or 21,000#	CENTER GATE	Heavy Duty Gate with Vertical Runners, HD Slam Latch & Easy Open Handles
COUPLER	2 5/16" Gooseneck 30K Coupler	REAR DOOR	Heavy Duty Butterfly Bull Gates with Pipe Latch
AXLES	Tandem 7K (16,20,24) or Triple 8K Hybrid (28,32,36,40)	REAR OPENING	Heavy Duty 2x4 Tubing Uprights
SUSPENSION	Quality Torsion Suspension	REAR BUMPER	2" Steel Pipe w/Floor Plate Steps on Corners
BRAKES	Electric Brakes on All Axles	REFLECTIVE TAPE	C2 DOT Reflective Red/White
TIRE	235/85R16 14ply AS or 235/75R17.5 18ply 215/75R17.5 16ply	FENDERS	3/16" High Tensile Steel Plate Z Pan Fenders
WHEEL	16" Silver Mod, 8-bolt, 17.5" Silver Solid	WIRING	In Conduit with Junction Box
SPARE	Full Spare with Carrier	ELECTRIC PLUG	7-Way RV Style
FRAME	2 x 2 x3/16" Angle	INTERIOR LIGHTS	10-Diode Clear Light Bar
GOOSENECK	Tandems use 8" Channel, Triples use 10" Channel	EXTERIOR LIGHTS	Standard or Deluxe DOT Sealed LED Lights
FRONT UPRIGHT	2" x 4" Tubing with Pipe Bow Reinforcement	LOAD LIGHTS	2 - 800 Lumen Rear LED Load Lights
CROSSMEMBERS	5" Channel on 4' Centers with 1/2" Flat Bar Reinforcement	GRAVEL GUARD	Aluminum Diamond Plate Front or Rear
JACK	2 Speed Jost 12,000# Drop Leg Jack (Spring - Loaded)	PRE-PREP	Steel Grit Blast
FLOOR	2" x 8" X-Lug Cleated Rubber	PAINT	High Solids Corrosion Inhibitive Color Coat at 4-6 Mils
SIDES	Open Sides with 1x3 Tubing Runners	CLEAR COAT	Base High Solids Acrylic Clear Coat Finish Paint Process at 2-4 Mils
SIDE UPRIGHTS	Steel Pipe Bows	SAFETY	Emergency Breakaway Switch w/Battery Backup
SIDE DOOR	41" Wide, Full Escape Door		
ROOF	Pipe Bows with Supporting Steel Rods		
TARP	18oz Canvas Top and Front with Roll Up Straps		



*Heavy Duty Butterfly Cattle Gates With 2x4 Tubing Frame and Pipe Latch.
Sliding tailgate also available.*



Movable Cut Gates



Flooring available in X-Lug Cleated Rubber

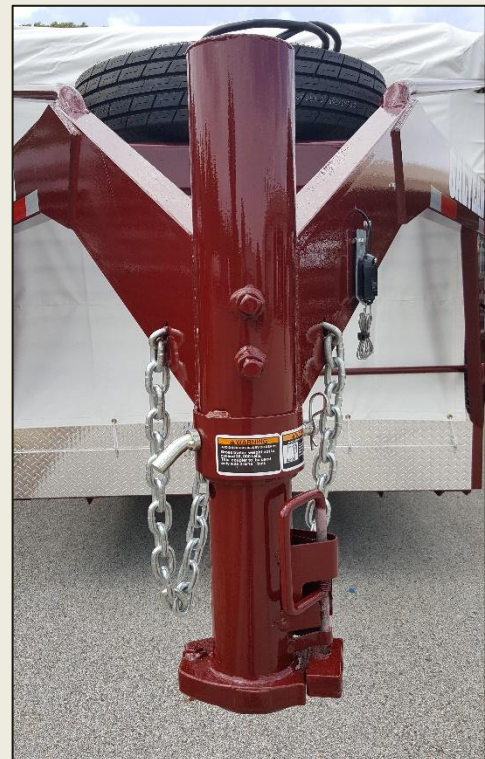


41" Full Escape Door - Can load a saddled horse!

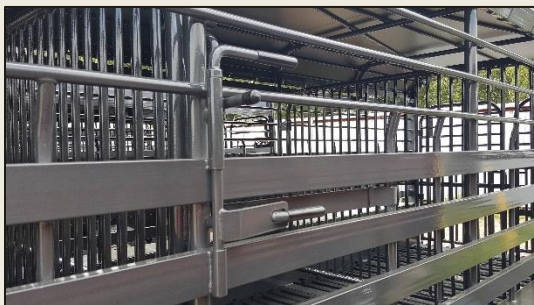
Aluminum Diamond Plate Gravel Guard Front & Rear!



Aluminum Diamond Plate Gravel Guard Front & Rear!



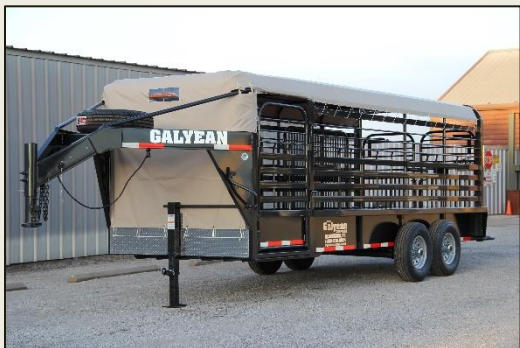
2 5/16" 25k or 30k Gooseneck Coupler



Easy Open Slam Latch Handles on each Gate Position



18oz Tarps in Multiple Colors, Front and Top



Torsion Axles Standard

Tandem 7k (16, 20, 24) or Triple 8k (28, 32, 36)



Heavy Duty 2x4 Tubing Uprights with Quad Tail Lights (Reverse lights also available)



Optional LED Load Lights with toggle switch in 2x4 post



Optional LED Dome Light in Nose with Toggle switch on Neck



Other Options Available like Dog Nose and Bullet Nose.



Heavy Duty Cut Gates are Standard!
Dog Gate or Slide Cut Gates Optional.



235/85R16 14ply All Steel



215/75R17.5 16ply All Steel 235/75R17.5 or 18ply All Steel Optional

Standard Setup

LENGTH	WIDTH	HEIGHT	CENTER GATE	AXLE	TIRES
16'	6'8"	6'6"	Set in Center (8/8)	Tandem 7000# Torsion	14ply, 16" All Steel
20'	6'8"	6'6"	Set Front Center (8/12)	Tandem 7000# Torsion	14ply, 16" All Steel
24'	6'8"	6'6"	2 Gates (8/8/8)	Tandem 7000# Torsion	16ply, 17.5" All Steel
28'	6'8"	6'6"	2 Gates (8/8/12)	TRIPLE 8000# Hybrid Torsion	16ply, 17.5" All Steel
32'	6'8"	6'6"	3 Gates (8/8/8/8)	TRIPLE 8000# Hybrid Torsion	18ply, 17.5" All Steel
36'	6'8"	6'6"	3 Gates (8/8/8/12)	TRIPLE 8000# Hybrid Torsion	18ply, 17.5 All Steel

Give us a call!

Galyean Livestock Trailers

WWW.GALYEANTRAILER.COM

Give us a call!

1-800-230-0924

1225 Industrial Dr, Henderson Tx 75652

903-657-7561 * Fax 903-657-0502

"Galyean Equipment Mfg. Co., Inc. reserves the right to change the design, features, options, materials, and/or specifications at any time, without notice, and without incurring any obligation for such changes. Contact Galyean Equipment Mfg. Co. Inc. to determine what is offered at the time of your order."